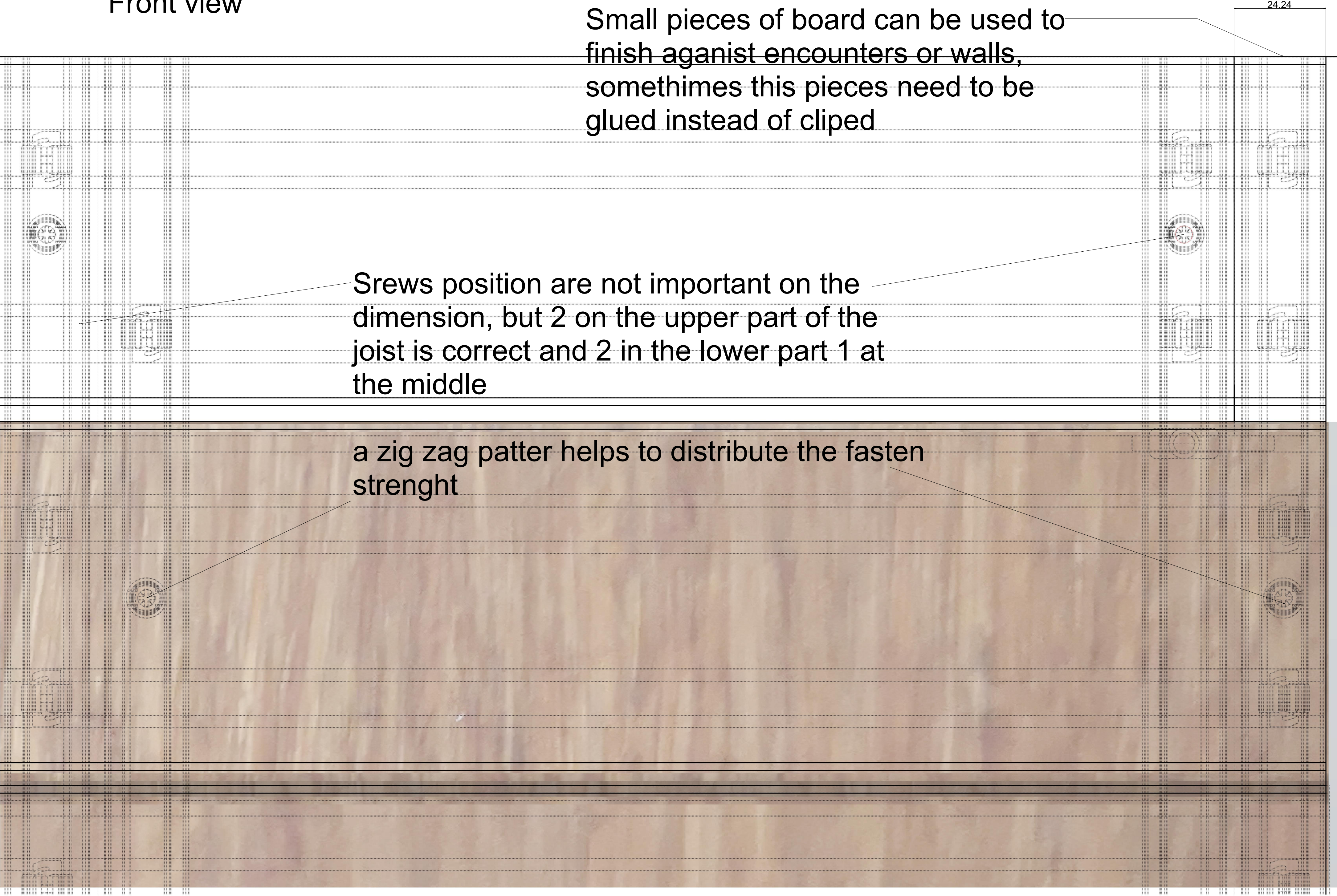


Front view

Small pieces of board can be used to finish against encounters or walls, sometimes this pieces need to be glued instead of clipped

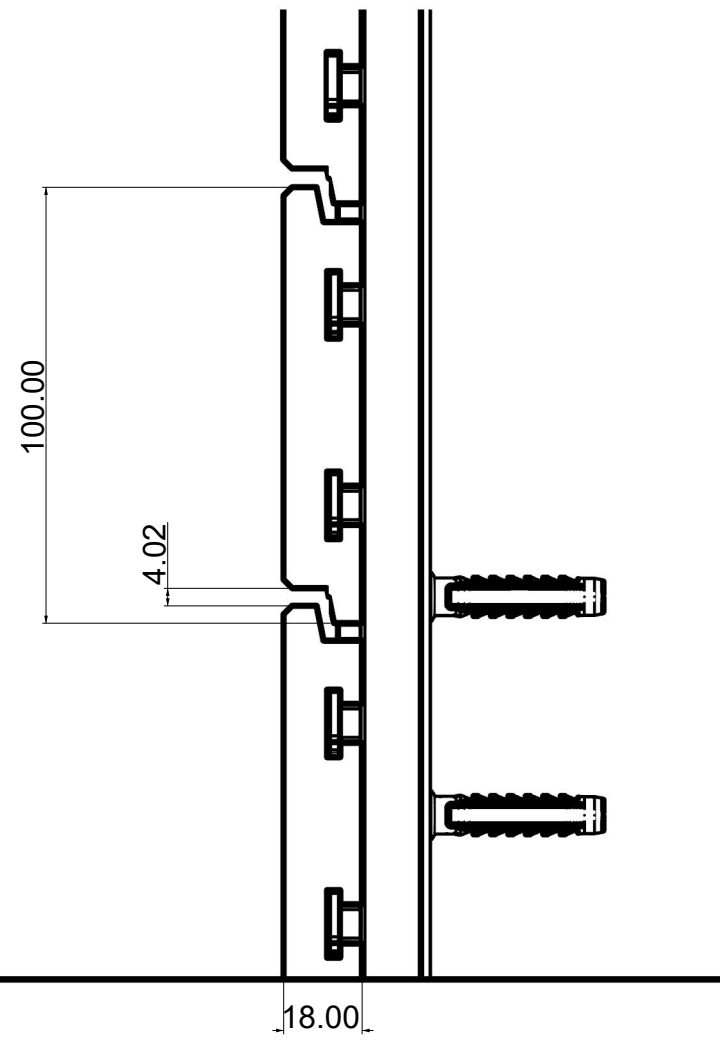
Srews position are not important on the dimension, but 2 on the upper part of the joist is correct and 2 in the lower part 1 at the middle

a zig zag patter helps to distribute the fasten strenght



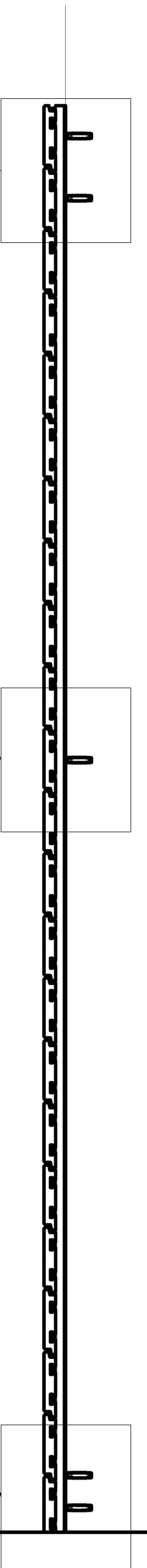


Back view



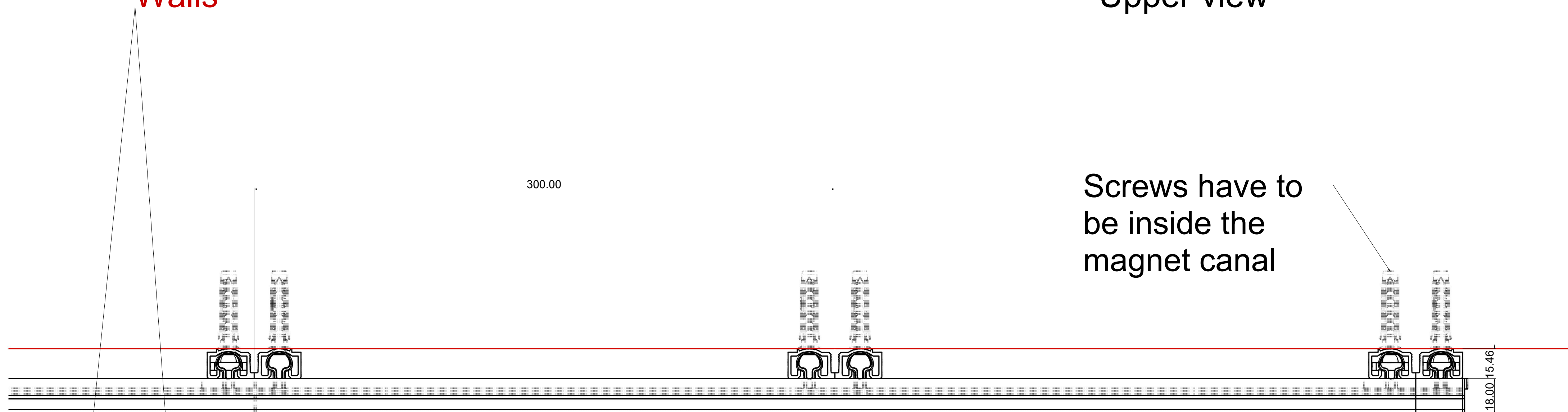
Side views

Screws need to be distributed throughout the joist to guarantee is correctly join.



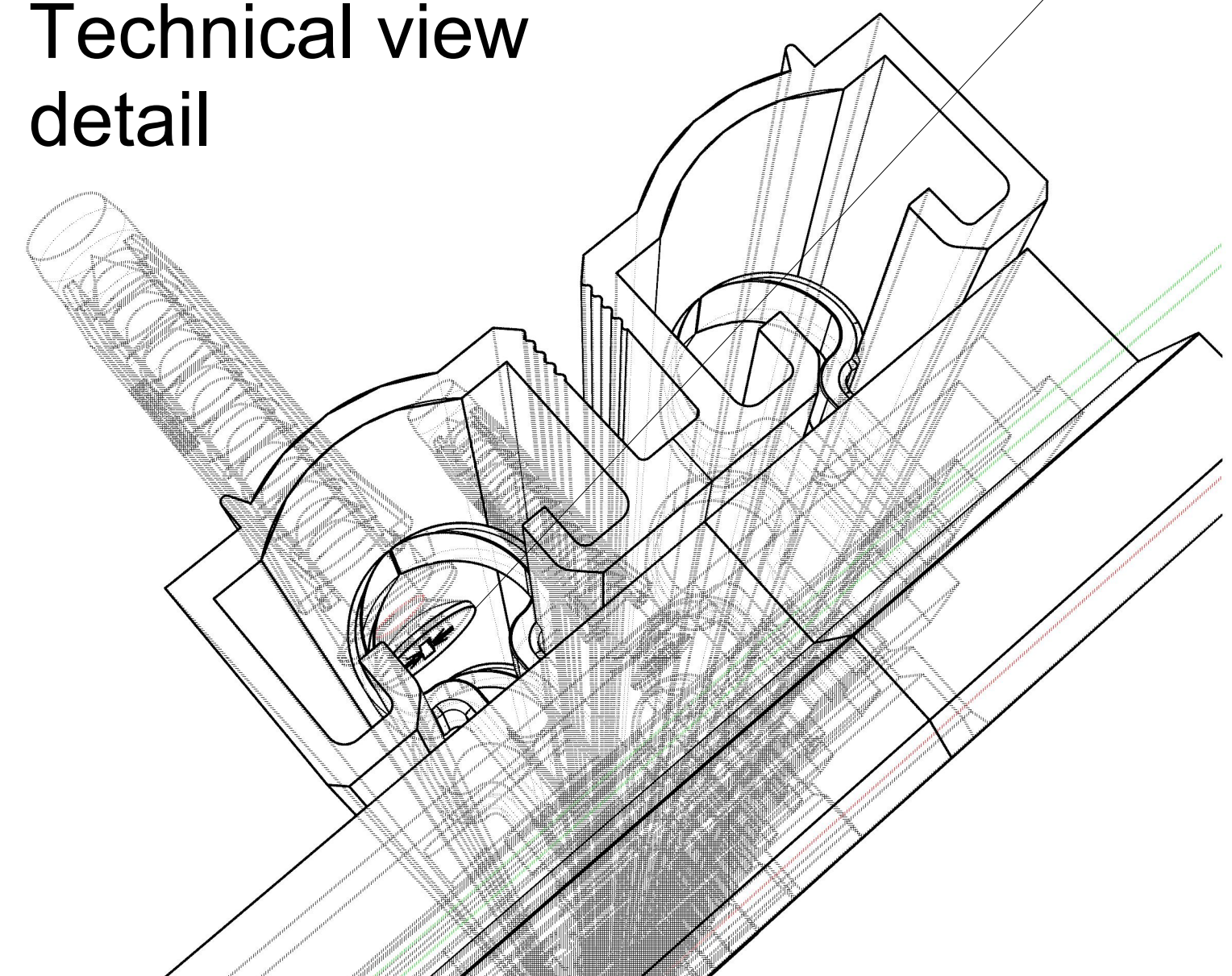
Walls

Upper view

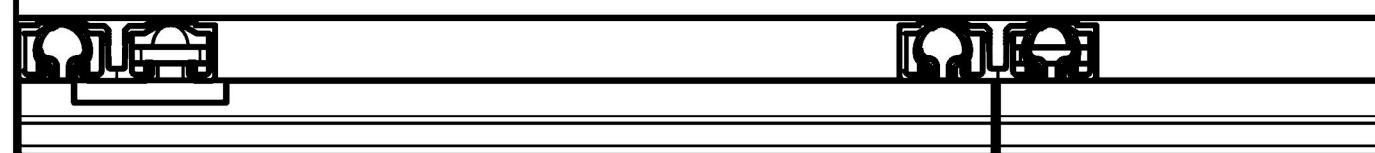


Screws have to be inside the magnet canal

Technical view detail



Encounter with side wall dimensions needs to be adapt for secure the fasten



The Magnet wall for wood

Different boards lengths are different and always multiple of 30 and 40 for fit to our system and minimize waste

for example:

2200



1800



1400



800

