

Speed@Lip



INSTALLATION GUIDE

the new paradigm for decking installation:

Speed@Lip



No predrilling | No screwing | Self blocking



Licensed by
Välinge



don't screw it



twist it

UPGRADED VERTICAL GRIP

SUITABLE FOR WOOD AND WPC

SILENT INSTALLATION: NO NOISE

TOOL LESS: NO GEAR WEARING

SAVE MONEY: INSTALLATION TIME AND NO SCREWS

IMPROVED HORIZONTAL FLEXIBILITY FOR EXPANSION

Suitable For:

-exterpark

SUITABLE FOR EXTERPARK 21MM:
WOOD & TECH



-exterpark
PLUS



-exterpark
TRACK JOIST



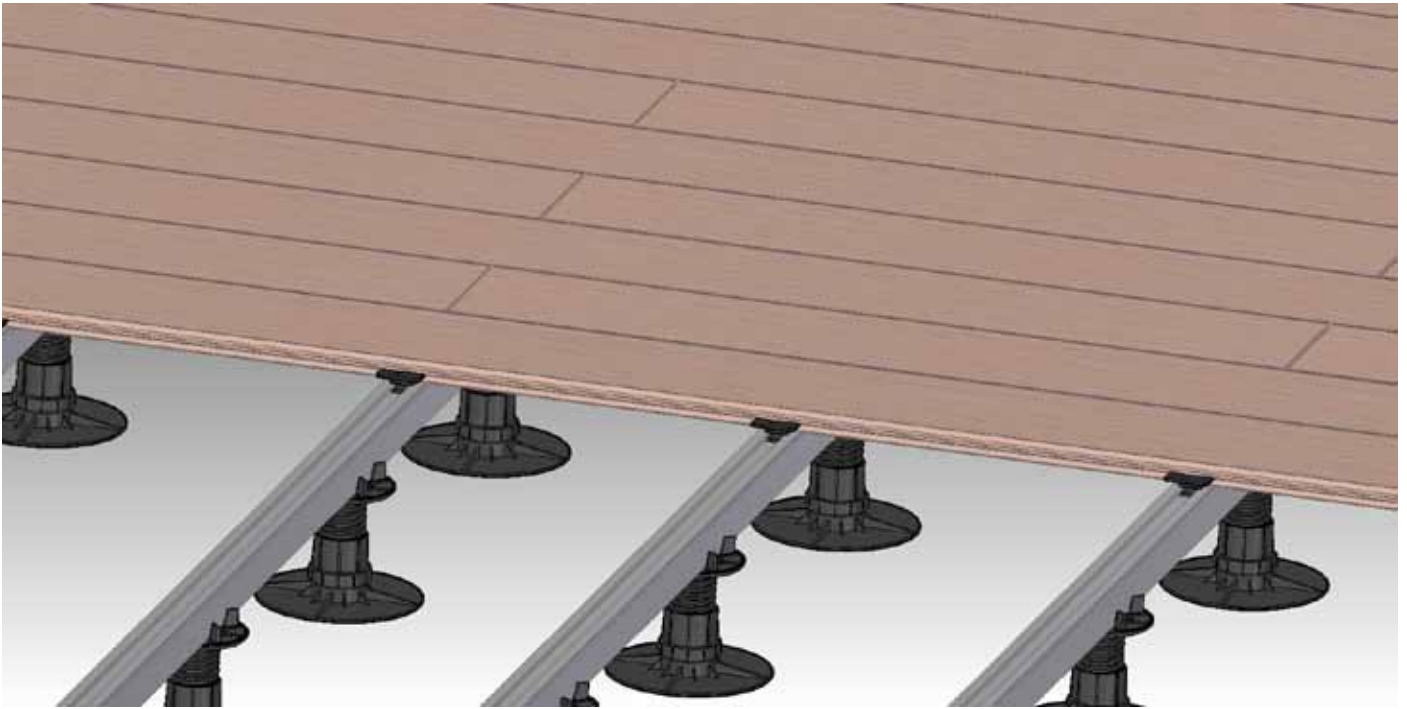
Speed@lip



-exterpark
PEDESTAL

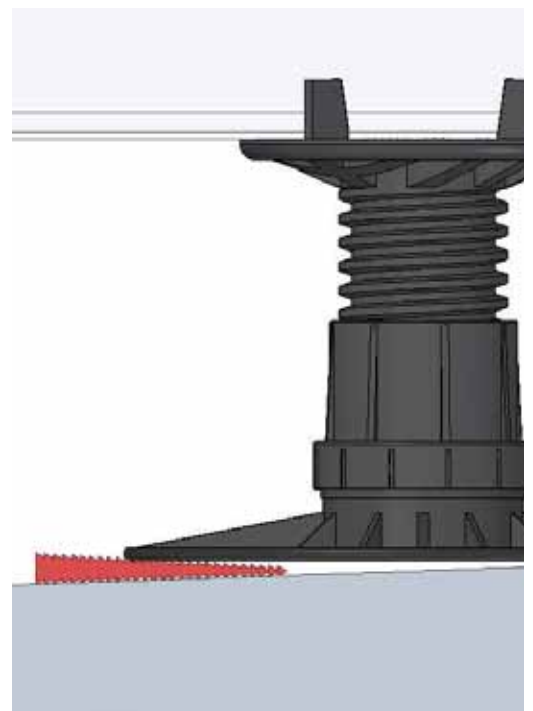
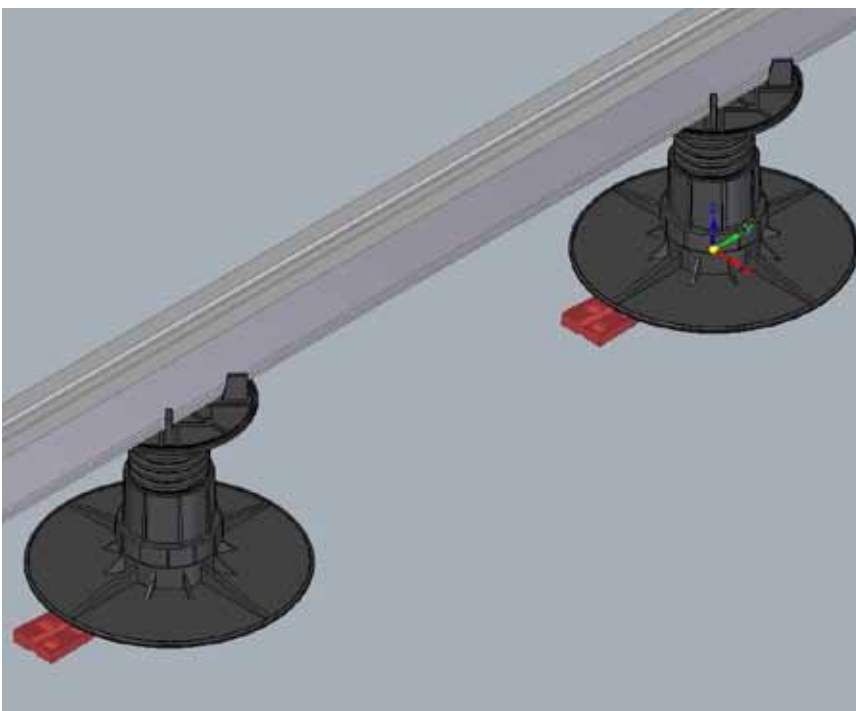


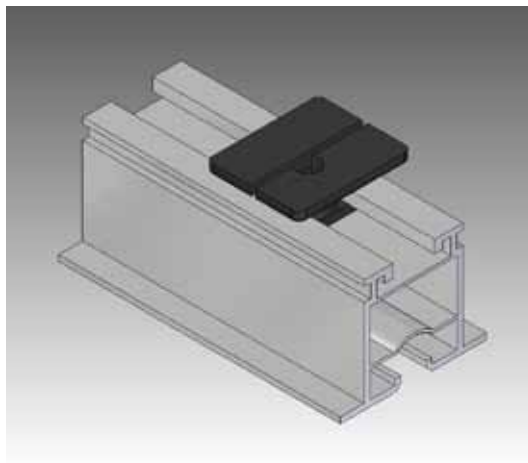
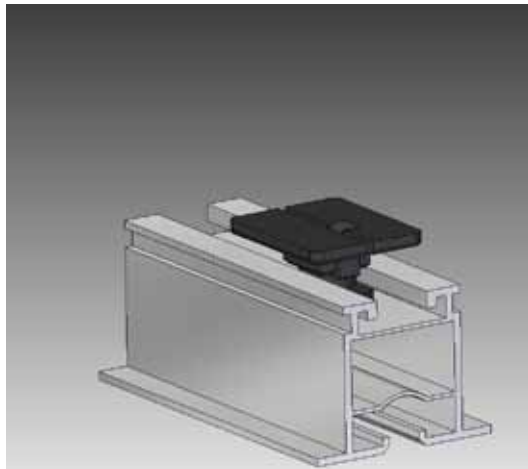
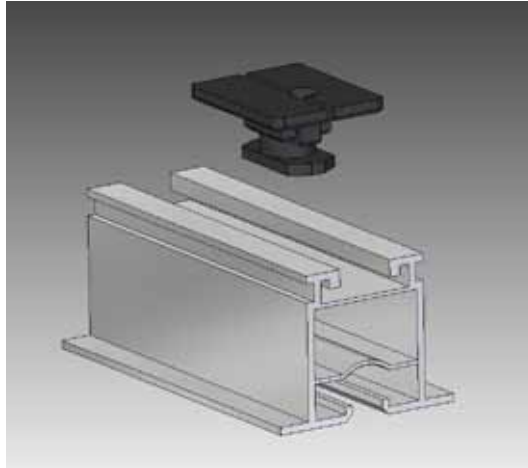
Exterpark is innovation. Exterpark is outdoor Total solutions.



JOISTS are as important as the deck itself. These are the foundation and structure of the future flooring. Track joists must be properly levelled and laid out on the floor every 40cm (in case of wood) or 36.60 cm (in case of Exterpark Tech).

Wedges and Pedestals may be used to complete the installation. Pedestals will raise the structure for additional subventilation and Wedges will correct slight differences in slopes without too much hassle.





SpeedClips

SpeedClip and BloClip are inserted inside the Track Joists, twisted and self-positioned. 3 key steps to a fast installation and secure subjection:

insert

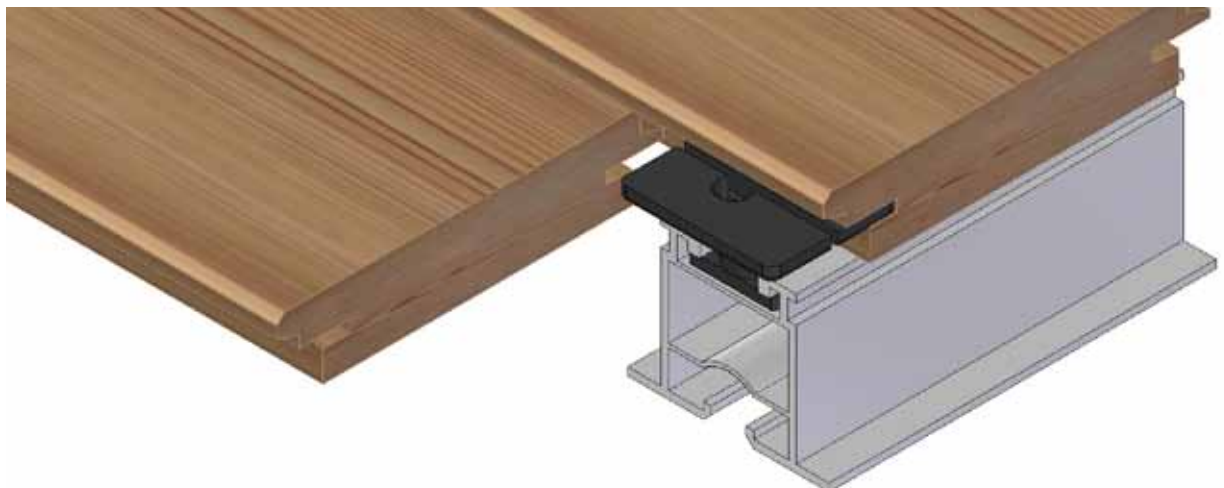
through the narrower side of the clip

place

once inside the guide it can be moved freely until the board is reached.

twist

by twisting the SpeedClip is ready to perform and offer a safe subjection.



Blocking Clips (BloClips)



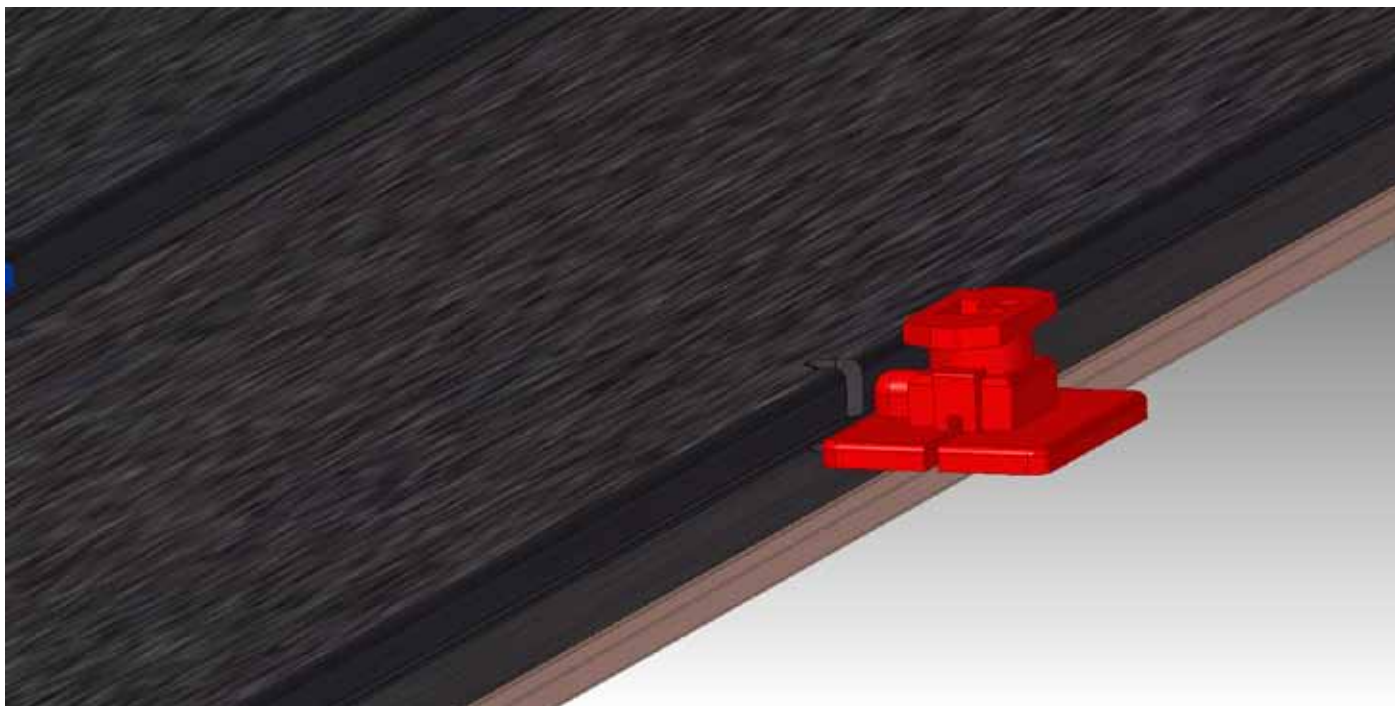
Illustrations show the position of BloClips with the board section upside down.

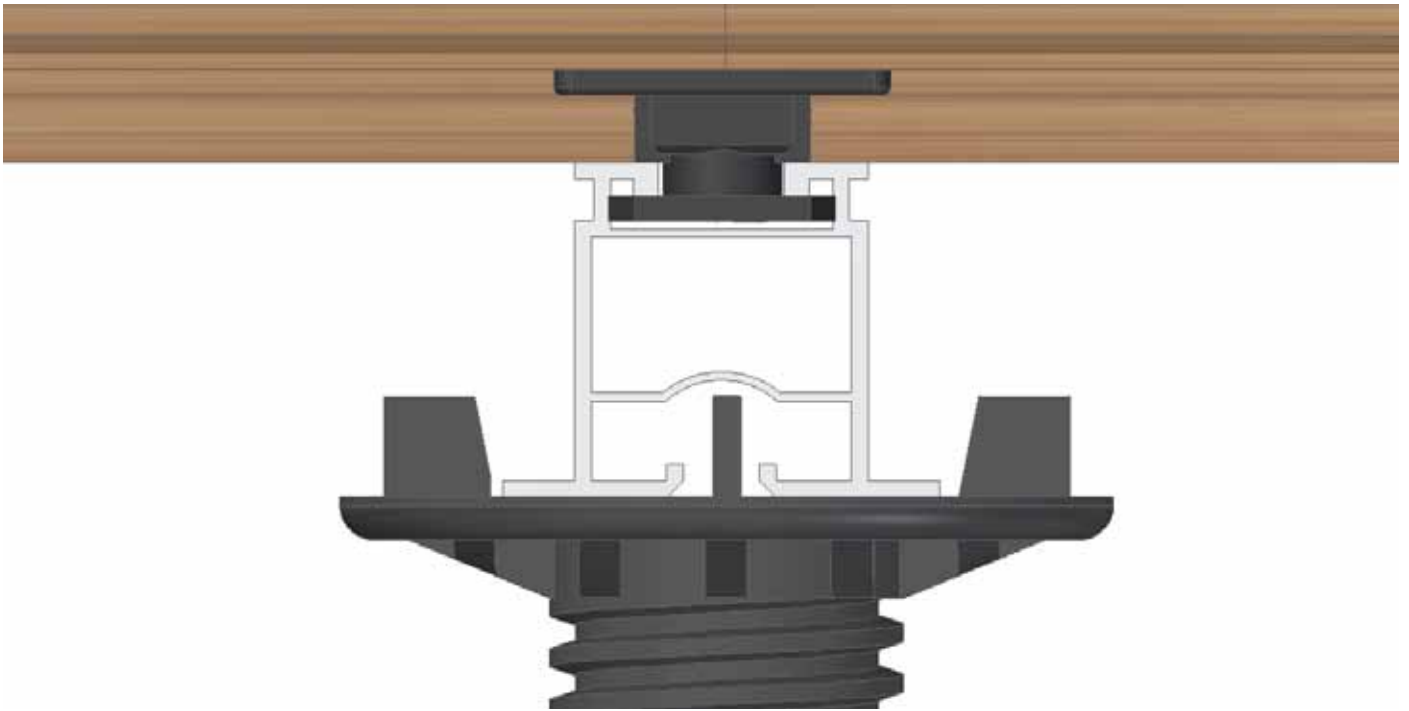
An indentation is made in the mentioned position according to multiple or product.

SpeedClip will be inserted in every joist every time a board is placed. In the case of Blocking clips (BloClip) we may find two scenarios:

Clip disposition in Exterpark TECH: A Blocking SpeedClips will be placed always in the middle of the board.

Clip disposition in Exterpark Deck: Blocking SpeedClips will be placed in the beginning of the installation line and every 8-10 running meters.





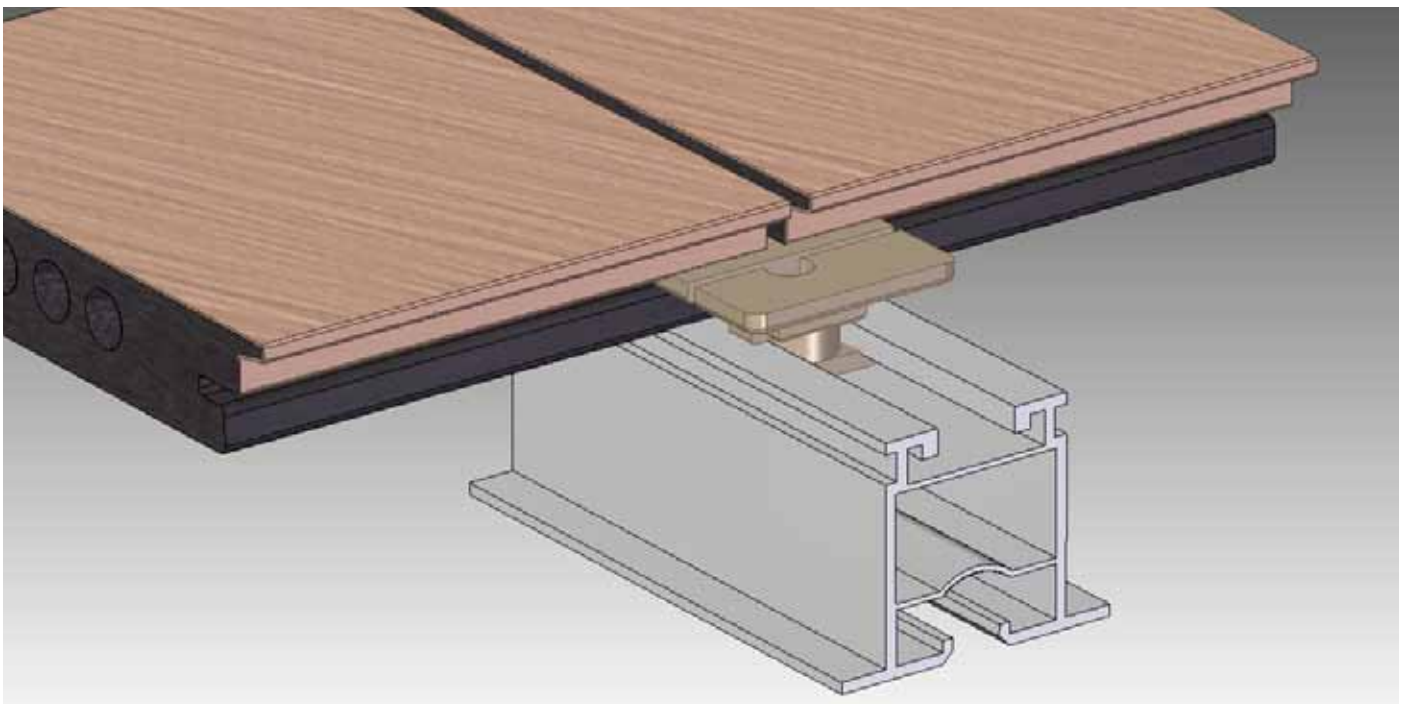
The good installation of short-ends is vital for a long-lasting installation.

All short-ends should be installed on top of a joist.

Individual Characteristics:

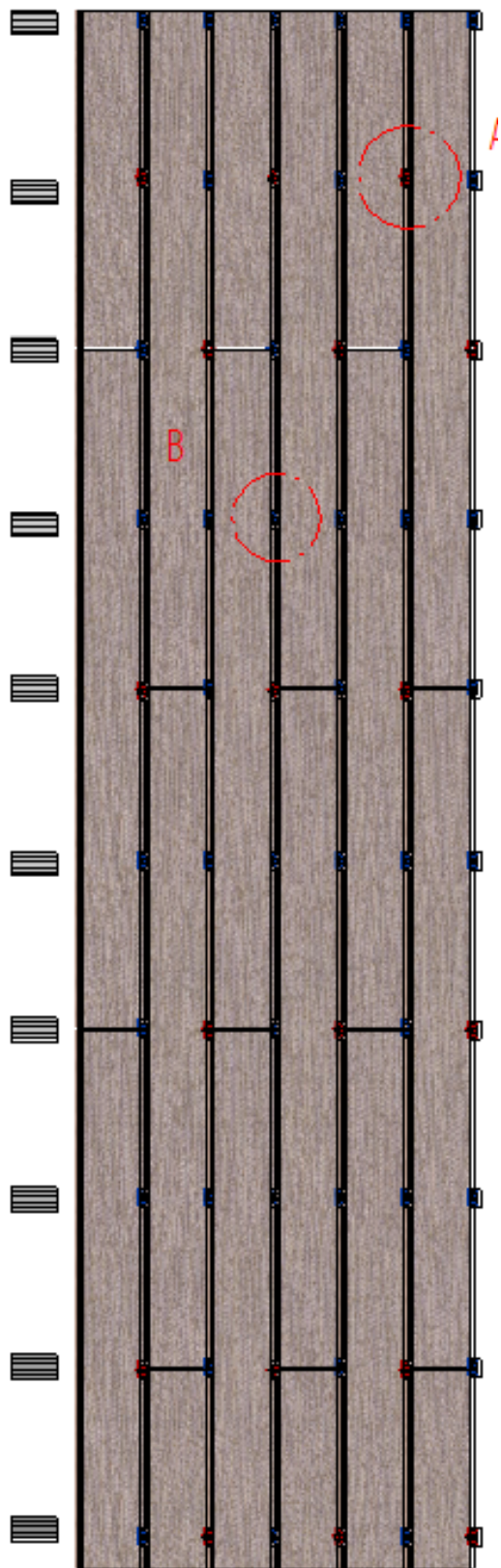
WPC: maintain a 4mm separation on short-ends when working with WPC.

Wood: Short-ends are tongue-and-grooved.



General Fitting Illustration

Exterpark TECH

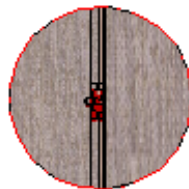


A

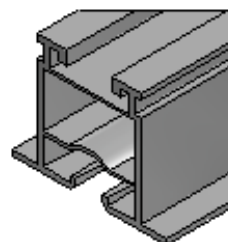
Blocking Clips:
Place always
in the middle
of the board

B

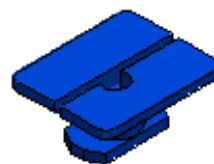
SpeedClips will
be installed in
all the other
joists



Track joist



SpeedClip

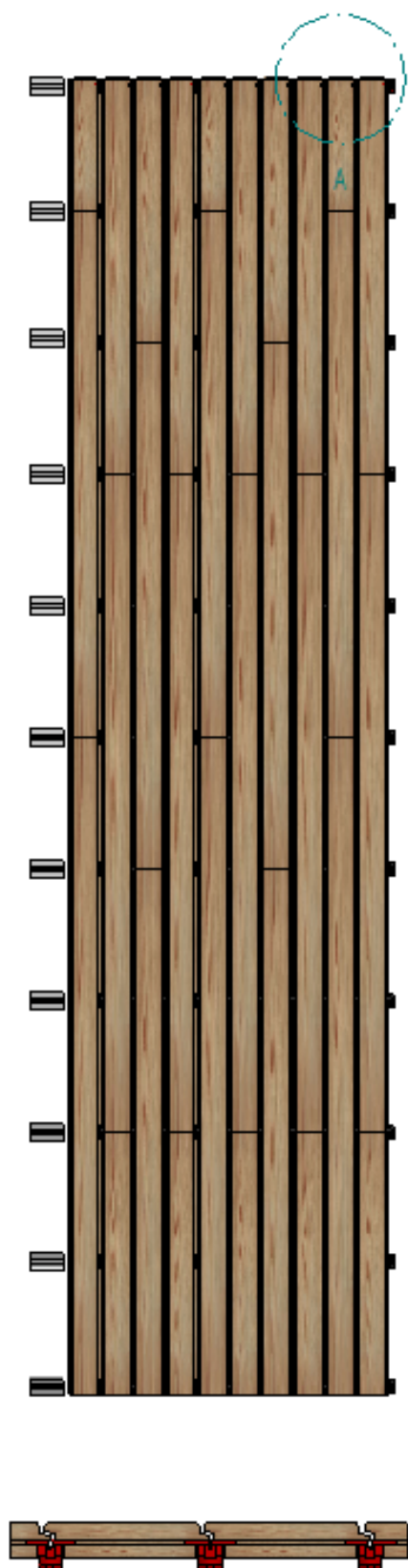


Blocking Clip



General Fitting Illustration

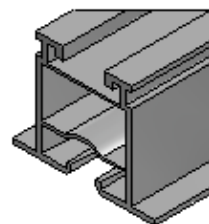
Exterpark (wood)



A

Blocking Clips will be used at the beginning of each line and every 8/10m

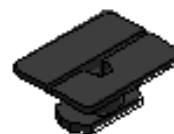
Track joist



Blocking Clip



SpeedClip





ACCESSORIES

TECHNICAL INFORMATION

-exterpark

-exterpark
TECH

Other installation accessories pedestals and wedges



-exterpark
PEDESTAL

PRODUCT	DESCRIPTION
Soporte Choco-10 (non adjustable)	
Exterpark Pedestal 5/7	50 to 70 mm
Exterpark Pedestal 7/10	70 to 100 mm
Exterpark Pedestal 10/13	100 to 135 mm
Exterpark Pedestal 13/17	135 to 170 mm
Exterpark Pedestal 17/19	170 to 190 mm
Exterpark Pedestal 19/22	190 to 220 mm
Exterpark Pedestal 22/25	220 to 250 mm
Exterpark Pedestal 25/27	250 to 270 mm
Exterpark Pedestal 27/30	270 to 300 mm
Exterpark Pedestal 30/33	300 to 330 mm
Exterpark Pedestal 33/36	330 to 360 mm
Exterpark Pedestal 36/39	360 to 390 mm

-exterpark
PEDESTALL

PRODUCT	DESCRIPTION
Exterpark pedesTALL 6/10	65 to 100 mm
Exterpark pedesTALL 10/13	100 to 130 mm
Exterpark pedesTALL 13/22	130 to 220 mm
Exterpark pedesTALL 22/31	220 to 310 mm
Exterpark pedesTALL 31/40	310 to 400 mm
Exterpark pedesTALL 40/49	400 to 490 mm
Exterpark pedesTALL 49/58	490 to 580 mm
Exterpark pedesTALL 58/67	580 to 670 mm

-exterpark
WEDGES

PRODUCT	DESCRIPTION
e-Wedge Red	5x28x65 mm
e-Wedge Grey	15x43x88 mm
e-Wedge Black	25x43x140 mm

-exterpark

-exterpark
TECH

Consumption of materials per sqm

Wood (Exterpark)

DIMENSION	MULTIPLE	SPEEDCLIP	BLOCKING CLIP	JOIST	PEDESTALS
95/100X21	30	30	3	3.5	8
115/120X21	30	23	3	3.5	8
95/100X21	40	25	3	3	7
115/120X21	40	20	3	3	7

WPC (Exterpark TECH)

MULTIPLE	SPEEDCLIP	BLOCKING CLIP	JOIST STANDARD	JOIST DOUBLE	PEDESTALS
31.42	19	4	2	1.5	8
36.6	17	4	2	1.2	7

Other installation instruments: Exterpark TECH Clip with screw

ETECH CLIP CLASSIC



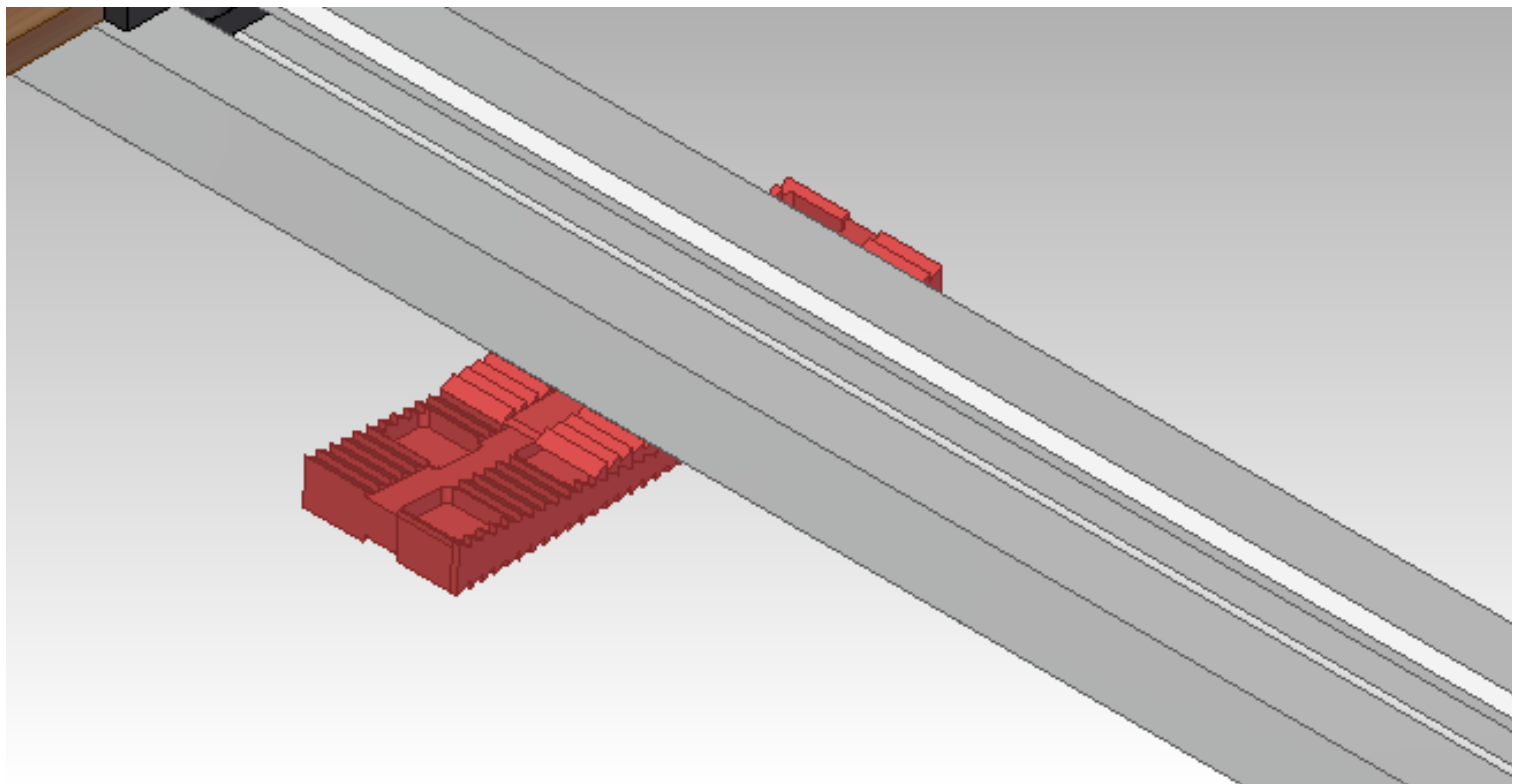
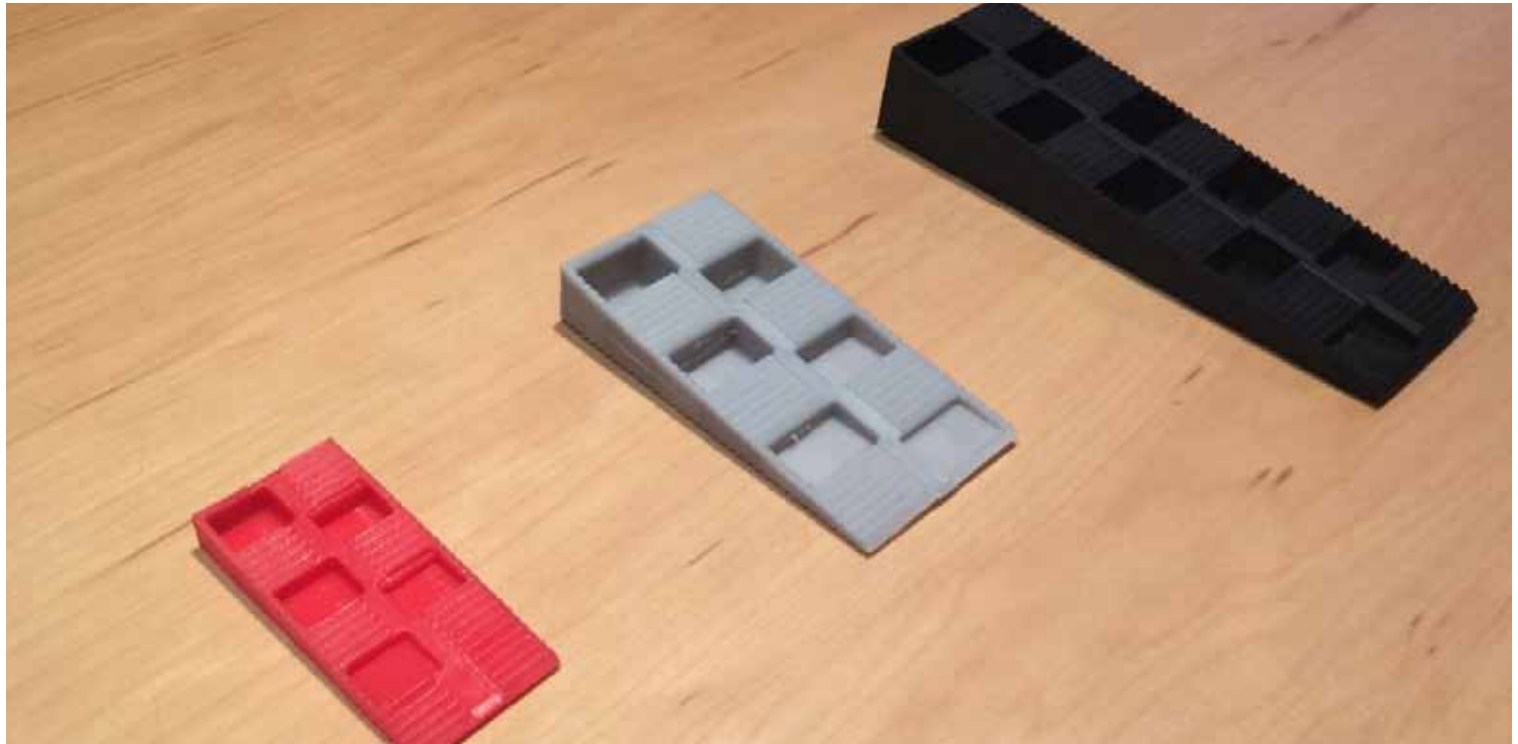
ETECH CLIP PLUS



-exterpark

-exterpark
TECH

Other installation accessories pedestals and wedges



-exterpark

-exterpark
TECH

Installing with SpeedClip

Exterpark Tech SpeedClip system

All the components have been carefully selected to provide the best performance outdoors when interacting with temperature and humidity levels. Always follow extended installation guidelines or contact our technical department for further information.

TAKE INTO CONSIDERATION WHEN INSTALLING

- a) Prepare the underfloor by placing a film to protect it against the humidity.
- b) Take into consideration that air ventilation and proper underfloor water drainage are vital for the good performance of the system,
- c) Place pedestals according to the use and multiple (specified in installation instructions)
- d) Pedestals have flaps that will trap the joist.
- e) Once the pedestal and joist base has been formed installer may start fitting the rest of the system.
- f) Place the boards on top of the joists (perpendicularly)
- g) Each joist counts with a guide for the clip to move onwards and be trapped within the track system.
- h) Push the clip towards the board. Twist it and it will automatically be fixed.

COMPLETE INSTALLATION SYSTEM:

Flooring:
Exterpark Tech Plus, Classic, Shield


Pedestals and wedges:
Heights for all kinds of projects

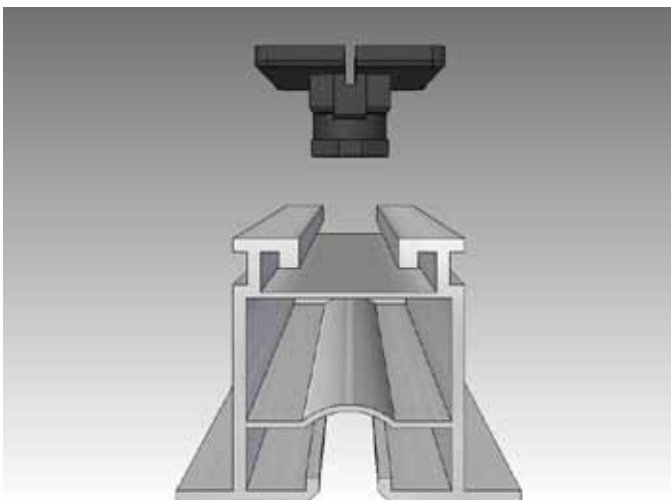
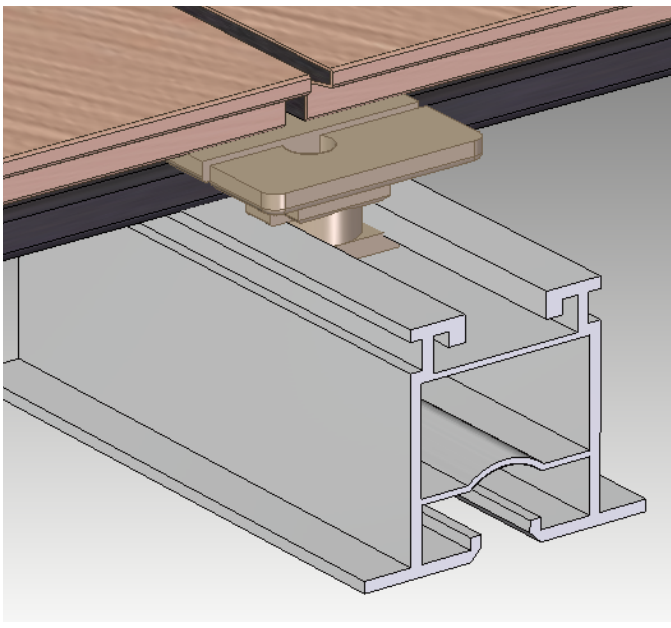
Patented SpeedClip and Track Joist



- Flexibility
- Better vertical and horizontal holding
- Time efficiency: fitting is 2 to 3 times faster
- Labour costs are significantly reduced
- Almost no need to use machinery
- No screws are needed AT ALL.

PATENTED INSTALLATION METHOD

SpeedClip 
screwless | self-blocking | secure | smart



-exterpark

-exterpark
TECH

Exterpark Tech Track Joist WPC

PHYSICAL CHARACTERISTICS:

Dimensions: 36x50x2000

Color: Dark Brown

Composition:

60% wood fiber

30% HDPE

10% Chemical additives

No toxic materials



Application: Floor and Wall Cladding.

Manufacturing technique:

Extrusion molding with gentle finish, no grain.

Advantages:

Eco Friendly: 100% recycled materials and sustainable.

No Maintenance

Easy to Install

Temperature Resistance, suitable from -30°C to +65°C

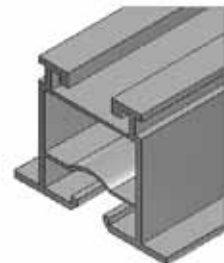
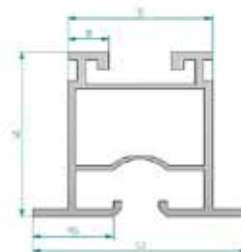
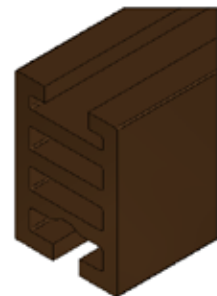
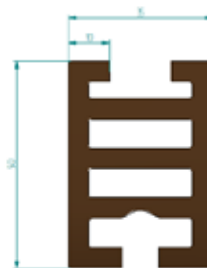
Compatibility: with any Exterpark Tech's system.

Patented track system.

Will not crack or splinter.

Reversible: to be used with track system and SpeedClip or standard installation.

Fitting: easy to cut on site if needed.



Extreme durability:

Resistant to: Water, moisture, insects, U.V.



Purpose:

Flooring

Installation:

Directly on the floor or pedestals

exterpark

exterpark
TECH

Technical specification

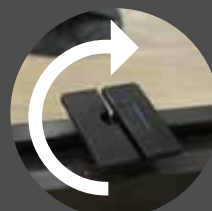
SpeedClip

Properties	Units	Method	Values	
			Dry as Moulded	Conditioned 23°,50% HR
Mechanical Properties				
Modulus of Elasticity, tensile	MPa	ISO 527-1/2	2600	1500
Yield Stress	MPa	ISO 527-1/2	70	45
Yield Strain	%	ISO 527-1/2	4	20
Charpy Impact strength (23° to -30°C)	kJ/m2	ISO 179/1eU	no break	no break
Electric Properties				
Relative Permittivity (1MHz)		IEC 250	3.5	6.4
Dissipation Factor (1MHz)	E-4	IEC 250	250	2600
Specific Volume Resistivity	Ohm cm	IEC 93	10 ¹⁵	10 ¹²
Specific Surface Resistivity	Ohm	IEC 93	10 ¹³	10 ¹⁰
Dielectric Strength	kV/mm	IEC 243-1	95	55
Comparative Tracking Index	V	IEC 112	600	-
Thermal Properties				
Fusion/Melting Temperature	°C	ISO 3146	222	
Temp. of deflection under Load at 0.45 MPa	°C	ISO 75-1/2	170	
Temp. of deflection under Load at 1.8 MPa	°C	ISO 75-1/2	65	
Coefficient of Linear Thermal Elongation parallel direction	E-4/K	DIN 53752	0.84	
Flammability (0.8 mm and 1.6mm)	Class	UL 94	HB	
Other properties				
No. Viscosity	cm³/g	DIN ISO 307	120-165	
Water Absorption (23° C, Saturation)	%	ISO 62	9.0	
Moisture Absorption (23° C, 50 % r.H.)	%	ISO 62	2.0	
Density (23°)	g/ccm	ISO 1183	1.10	



SpeedClip

Speed@Lip



No predrilling | No screwing | Self blocking



Rambla Solanes 38/40 08940 Cornellà de Llobregat (Barcelona)

Tel. +34 93 508 65 80 Fax +34 93 508 65 90

info@vyra.es www.vyra.es www.exterpark.com